

# Manitou Grove



## THE EMERALD

### HOME HIGHLIGHTS

- 2,539 Total Living Sq. Ft.
- 4 Bedrooms / 2.5 Baths
- Open Concept Kitchen & Great Room
- Kitchen Buffet
- Media/Playroom on Upper Level
- Outdoor Covered Back Patio
- 2-Car Garage



NORTHRIDGE HOMES  
GENERAL CONTRACTORS

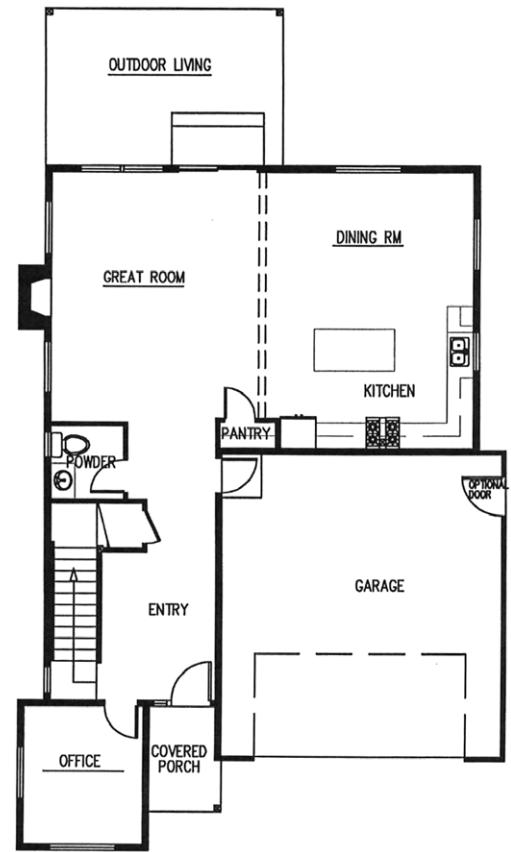
FOR MORE INFORMATION: **Call Rick Seddon** (253) 279.1986

[SEDDONMARKETING.COM](http://SEDDONMARKETING.COM)

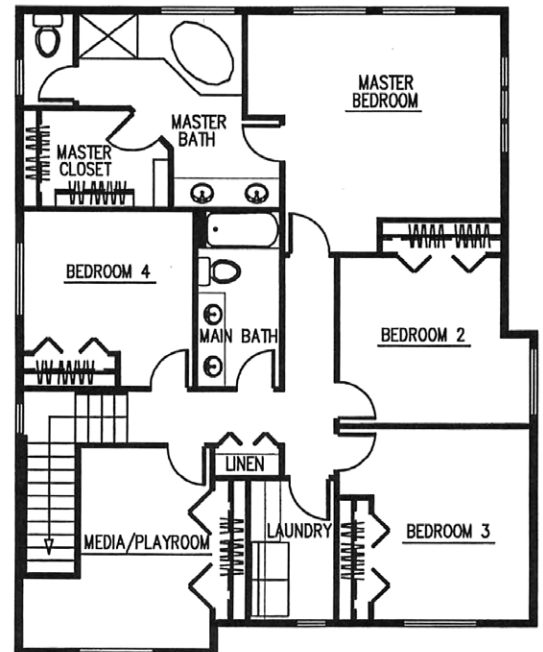


**John L. Scott**  
REAL ESTATE

### MAIN LEVEL



### UPPER LEVEL



PLEASE NOTE: In a continuous effort to balance market demands for quality and affordability, the builder of this property reserves the right to change plan specifications, prices and availability without notice.

