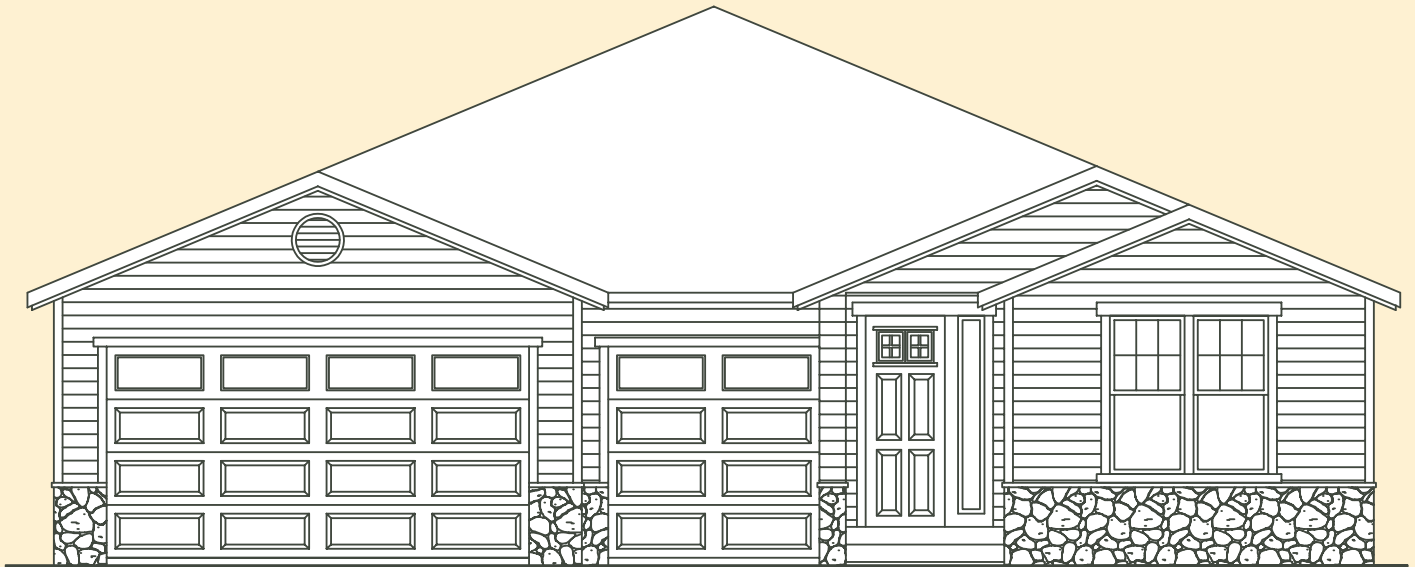




THE CAMBRIDGE

2289 SF. TOTAL LIVING



HIGHLIGHTS OF THE CAMBRIDGE PLAN

The Cambridge plan is a single story rambler plan featuring a comfortably sized layout with ample room for entertaining and living. The Cambridge offers a well appointed master suite with large walk-in closet and 5-piece master bath. The open concept living space offers a cozy kitchen and eating nook, comfortable great room with easy access to the covered back patio with fireplace. The utility room is located just a few short feet off the kitchen with access to the 3-car garage just beyond. Enjoy 2 additional bedrooms where one can be used as a den; both within steps of a separate full bath.

FOR MORE INFORMATION: Call Rick Seddon (253) 279.1986



PLEASE NOTE: In a continuous effort to balance market demands for quality and affordability, the builder of this property reserves the right to change plan specifications, prices and availability without notice.

OakRidge
HOMES

SA SEDDON
MARKETING



THE CAMBRIDGE

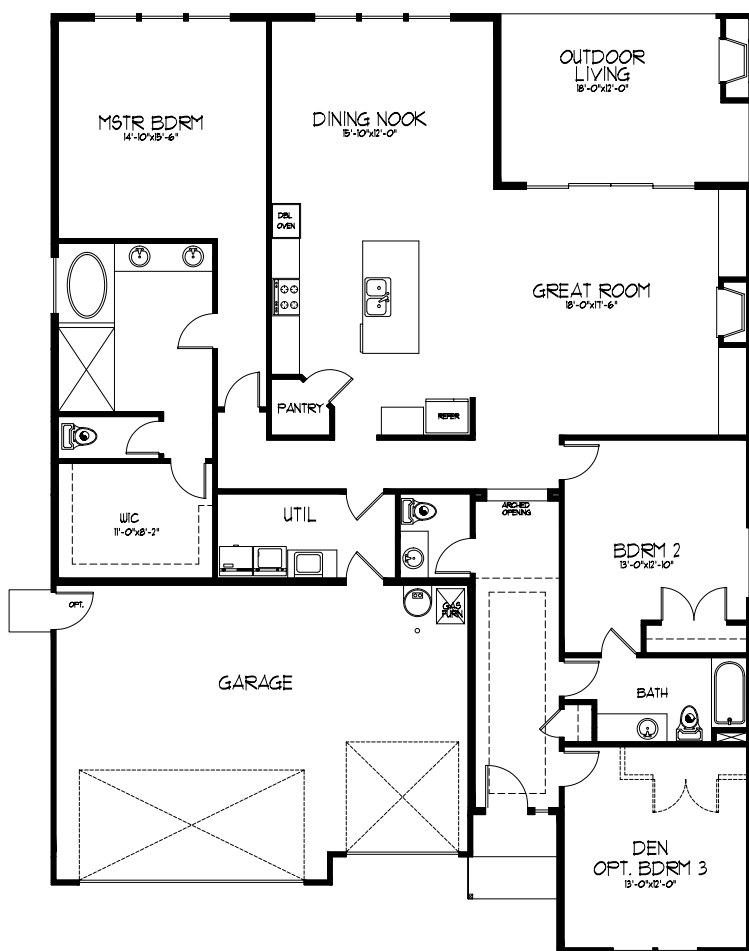
2289 SF.

TOTAL LIVING

OakRidge
HOMES

FEATURES & HIGHLIGHTS

- 8" primed beveled Cemplank siding
- Lifetime warranty architectural composite roofing
- Low-E white vinyl windows with grids (per plan)
- Outdoor living area with fireplace, mantle, sky-lite (per plan), patio, bbq stub, ceiling fan with slider and 4 can lights
- High efficiency forced air gas furnace, with electronic ignition, programmable thermostat and quick recovery 50 gallon HWT
- Recessed Alder cabinets in several stains to choose from with built-in cabinet hood over stove, soft closed hinges on doors and full extension guides
- Professionally landscaped front yards
- Stainless steel appliance package
- Professionally designed hard surfaces and interiors
- Primed and painted 2 panel smooth surface interior doors with crown molding and wood wrapped windows on the main floor



MAIN LEVEL

FOR MORE INFORMATION: Call Rick Seddon (253) 279.1986