



THE NEWPORT

3167 SF. TOTAL LIVING



HIGHLIGHTS OF THE NEWPORT PLAN

The Newport is a classic Northwest inspired home design featuring a cozy formal dining and study space just off the main entry, an open concept living and casual dining space that opens up to the outdoor living area in the rear of the home. The 3-car garage can be optioned to a 4-car tandem style that can be made into extra storage or shop. The upper level offers 4 bedrooms with one being a grand master suite with large walk-in closet and luxury 5-piece bath. Enjoy a convenient utility room, hallway linen closet, full bath and generous bonus room living.

FOR MORE INFORMATION: Call Rick Seddon (253) 279.1986



PLEASE NOTE: In a continuous effort to balance market demands for quality and affordability, the builder of this property reserves the right to change plan specifications, prices and availability without notice.

OakRidge
HOMES

SED DON
MARKETING



THE NEWPORT

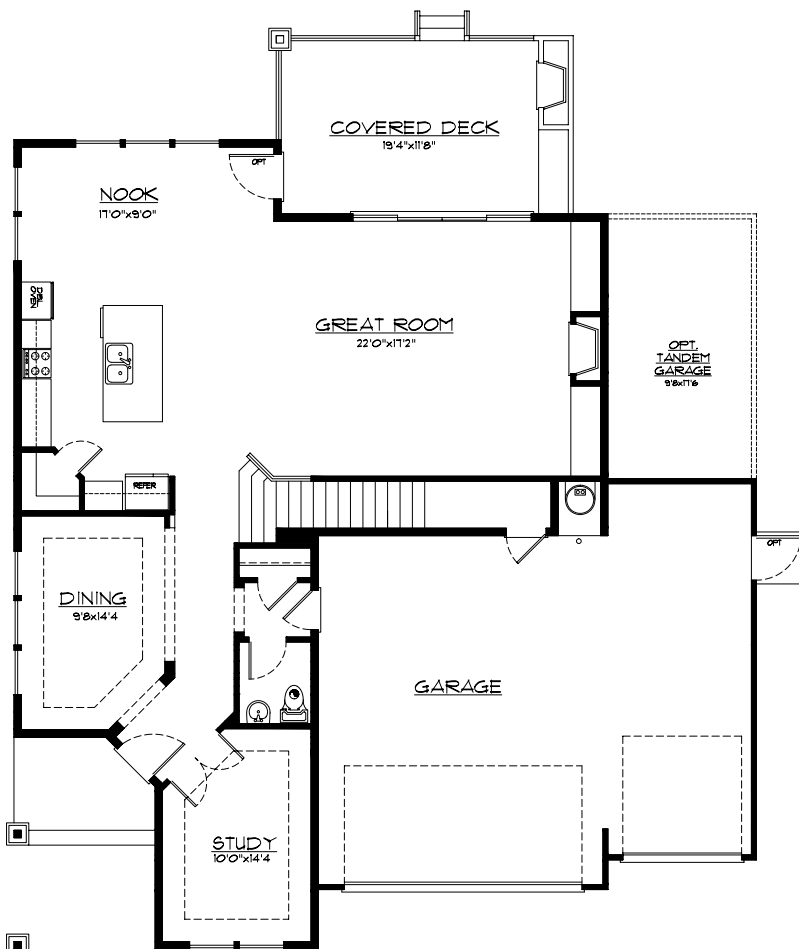
3167 SF.

TOTAL LIVING

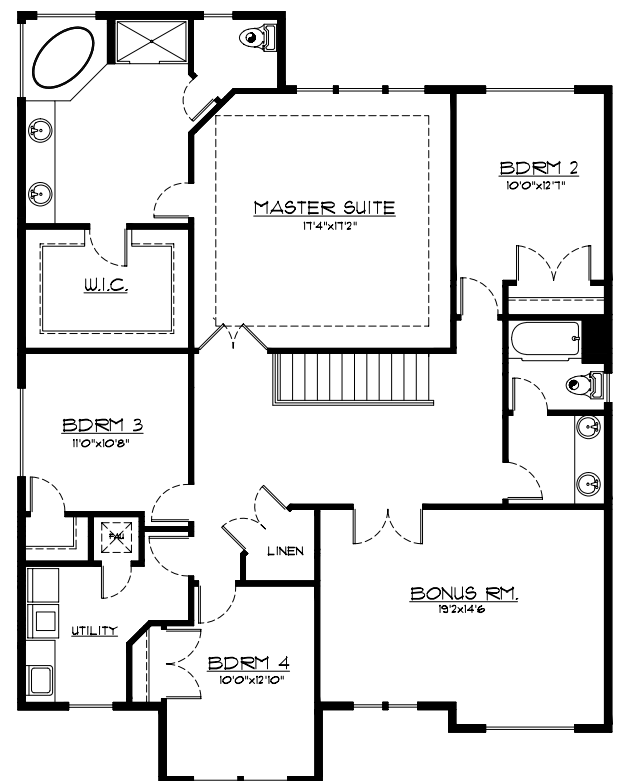
OakRidge
HOMES

FEATURES & HIGHLIGHTS

- 8" primed beveled Cemplank siding
- Lifetime warranty architectural composite roofing
- Low-E white vinyl windows with grids (per plan)
- Outdoor living area with fireplace, mantle, sky-lite (per plan), patio, bbq stub, ceiling fan with slider and 4 can lights
- High efficiency forced air gas furnace, with electronic ignition, programmable thermostat and quick recovery 50 gallon HWT
- Recessed Alder cabinets in several stains to choose from with built-in cabinet hood over stove, soft closed hinges on doors and full extension guides
- Professionally landscaped front yards
- Stainless steel appliance package
- Professionally designed hard surfaces and interiors
- Primed and painted 2 panel smooth surface interior doors with crown molding and wood wrapped windows on the main floor



MAIN LEVEL



UPPER LEVEL

FOR MORE INFORMATION: Call Rick Seddon (253) 279.1986