



THE ROXBURY

3523 SF. TOTAL LIVING



HIGHLIGHTS OF THE ROXBURY PLAN

The Roxbury is similar to our Kingston plan with one major difference—you will enjoy a much larger great room space just off the kitchen with direct access to a covered outdoor living area with fireplace. The main level also features a guest suite with adjacent 3/4 bath. The upper level offers a generous master suite with large 5-piece bath and huge walk-in closet, 3 additional bedrooms, full bath and large bonus loft area. The Roxbury also features a 3-car garage with added room for storage or a small shop.

FOR MORE INFORMATION: Call Rick Seddon (253) 279.1986



PLEASE NOTE: In a continuous effort to balance market demands for quality and affordability, the builder of this property reserves the right to change plan specifications, prices and availability without notice.

OakRidge
HOMES

SA SEDDON
MARKETING



THE ROXBURY

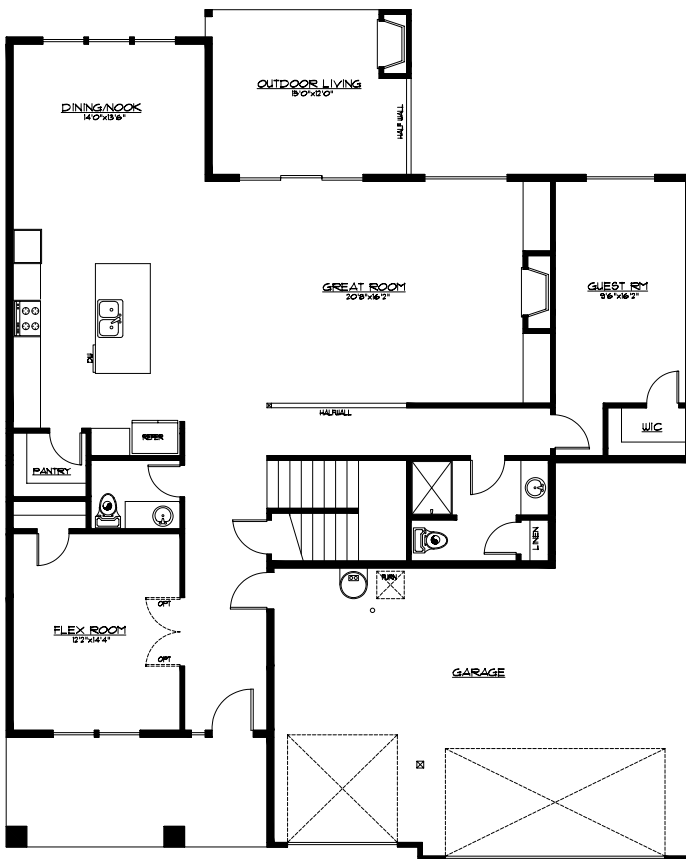
3523 SF.

TOTAL LIVING

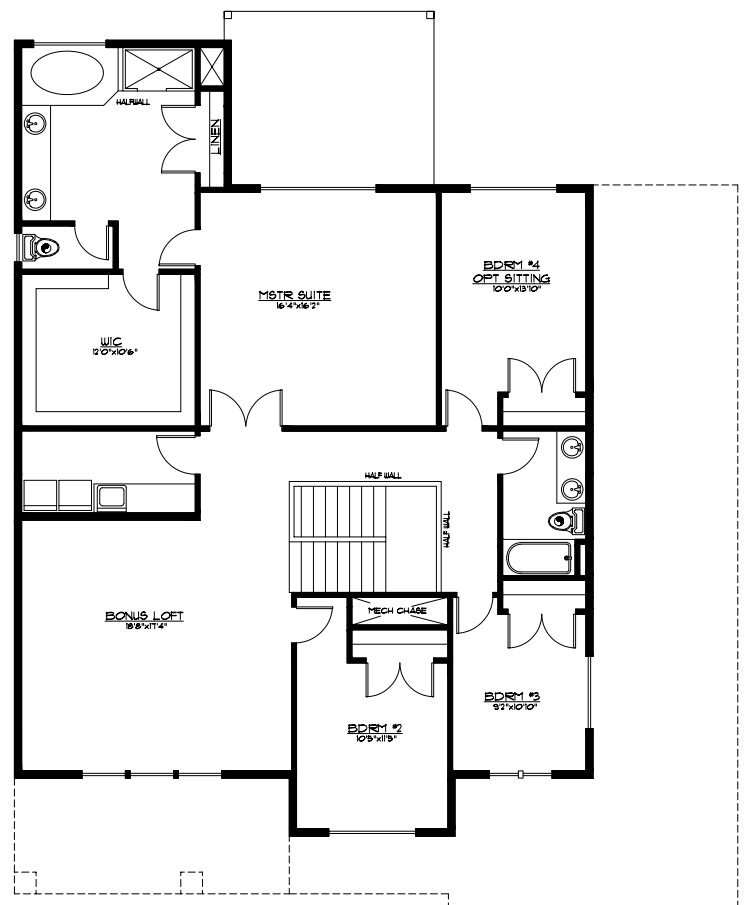
OakRidge
HOMES

FEATURES & HIGHLIGHTS

- 8" primed beveled Cemplank siding
- Lifetime warranty architectural composite roofing
- Low-E white vinyl windows with grids (per plan)
- Outdoor living area with fireplace, mantle, sky-lite (per plan), patio, bbq stub, ceiling fan with slider and 4 can lights
- High efficiency forced air gas furnace, with electronic ignition, programmable thermostat and quick recovery 50 gallon HWT
- Recessed Alder cabinets in several stains to choose from with built-in cabinet hood over stove, soft closed hinges on doors and full extension guides
- Professionally landscaped front yards
- Stainless steel appliance package
- Professionally designed hard surfaces and interiors
- Primed and painted 2 panel smooth surface interior doors with crown molding and wood wrapped windows on the main floor



MAIN LEVEL



UPPER LEVEL

FOR MORE INFORMATION: Call Rick Seddon (253) 279.1986