



THE CHARLESTON

3801 SF. TOTAL LIVING



HIGHLIGHTS OF THE CHARLESTON PLAN

The Charleston is a distinct Craftsman style home with charming details found both inside and out. This well-featured design offers a generous open concept living and dining space that opens to an outdoor living area in the rear of the home. The 3-car garage has an added 4th car tandem or extra storage/shop at the rear of the garage. The upper level features a luxurious master suite complete with a private sitting area, 5-piece master bath, and his/hers walk-in closets. Enjoy 4 additional bedrooms, a convenient utility room with sink, full bath and generous bonus room living as well.

FOR MORE INFORMATION: Call Rick Seddon (253) 279.1986



PLEASE NOTE: In a continuous effort to balance market demands for quality and affordability, the builder of this property reserves the right to change plan specifications, prices and availability without notice.

OakRidge
HOMES

SA SEDDON
MARKETING



THE CHARLESTON

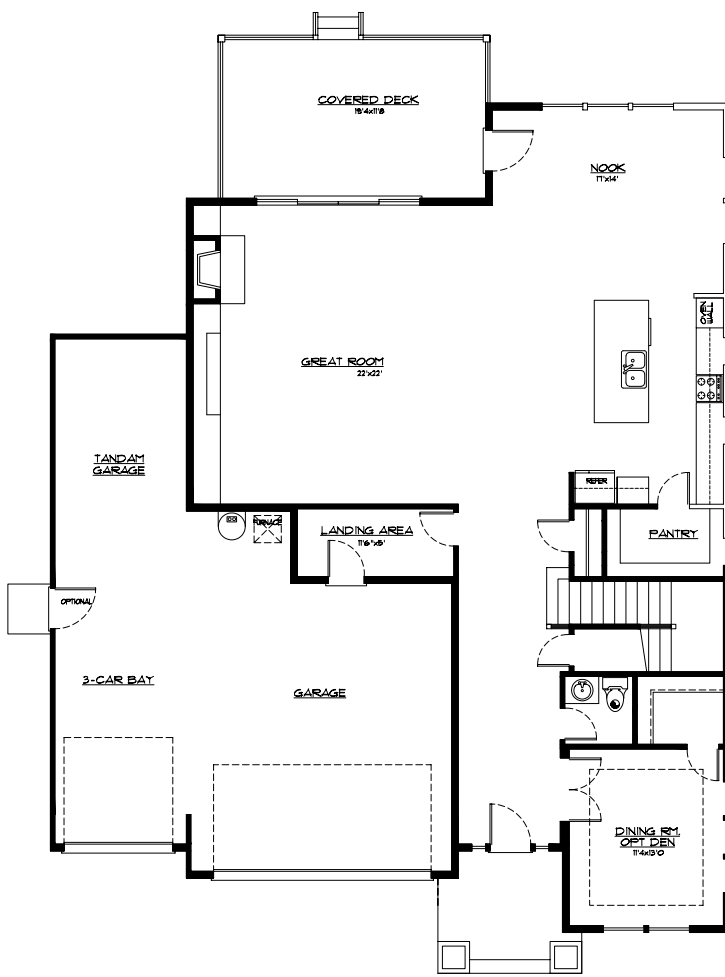
3801 SF.

TOTAL LIVING

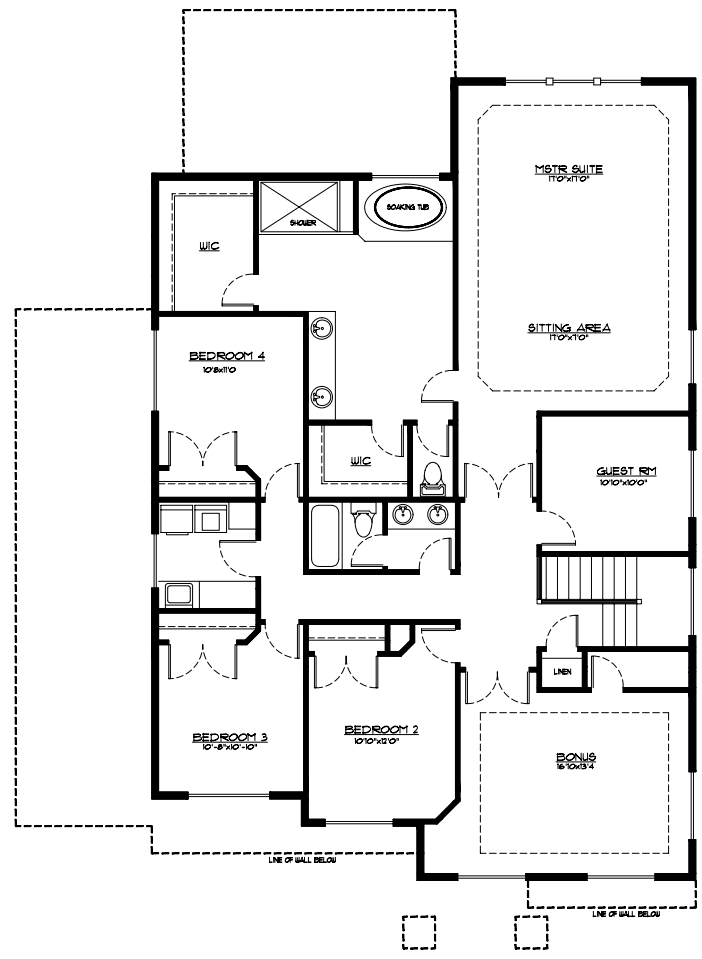
OakRidge
HOMES

FEATURES & HIGHLIGHTS

- 8" primed beveled Cemplank siding
- Lifetime warranty architectural composite roofing
- Low-E white vinyl windows with grids (per plan)
- Outdoor living area with fireplace, mantle, sky-lite (per plan), patio, bbq stub, ceiling fan with slider and 4 can lights
- High efficiency forced air gas furnace, with electronic ignition, programmable thermostat and quick recovery 50 gallon HWT
- Recessed Alder cabinets in several stains to choose from with built-in cabinet hood over stove, soft closed hinges on doors and full extension guides
- Professionally landscaped front yards
- Stainless steel appliance package
- Professionally designed hard surfaces and interiors
- Primed and painted 2 panel smooth surface interior doors with crown molding and wood wrapped windows on the main floor



MAIN LEVEL



UPPER LEVEL

FOR MORE INFORMATION: Call Rick Seddon (253) 279.1986