



THE BIRCHWOOD

2936 SF. TOTAL LIVING



HIGHLIGHTS OF THE BIRCHWOOD PLAN

The Birchwood is a well featured design featuring many options including an open concept kitchen and living space that opens up to the outdoor living area in the rear of the home. Formal dining room and mud room also located on the main floor. The upper level offers 4 bedrooms with one being a grand master suite with large walk-in closet and luxury 5-piece bath. Enjoy a convenient utility room, full bath and generous loft, as well.

FOR MORE INFORMATION: Call Rick Seddon (253) 279.1986



PLEASE NOTE: In a continuous effort to balance market demands for quality and affordability, the builder of this property reserves the right to change plan specifications, prices and availability without notice.

OakRidge
HOMES

SA SEDDON
MARKETING



THE BIRCHWOOD

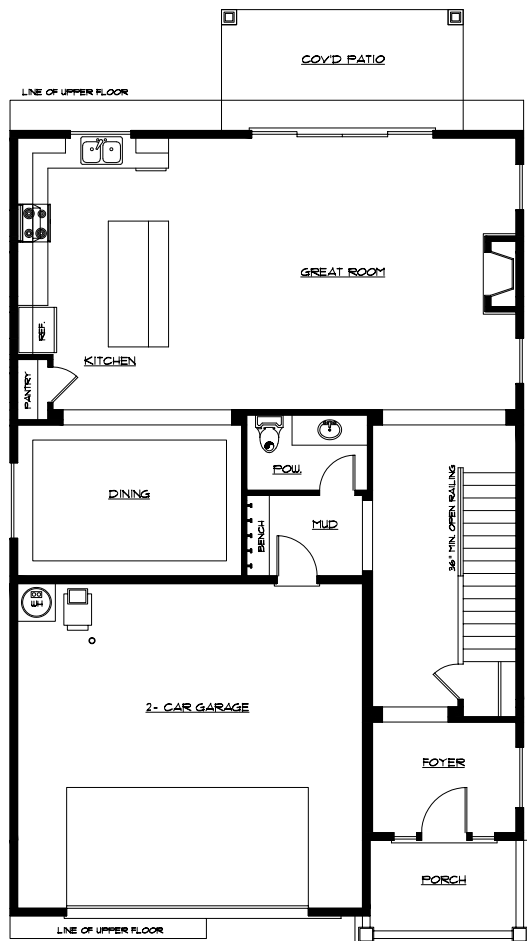
2936 SF.

TOTAL LIVING

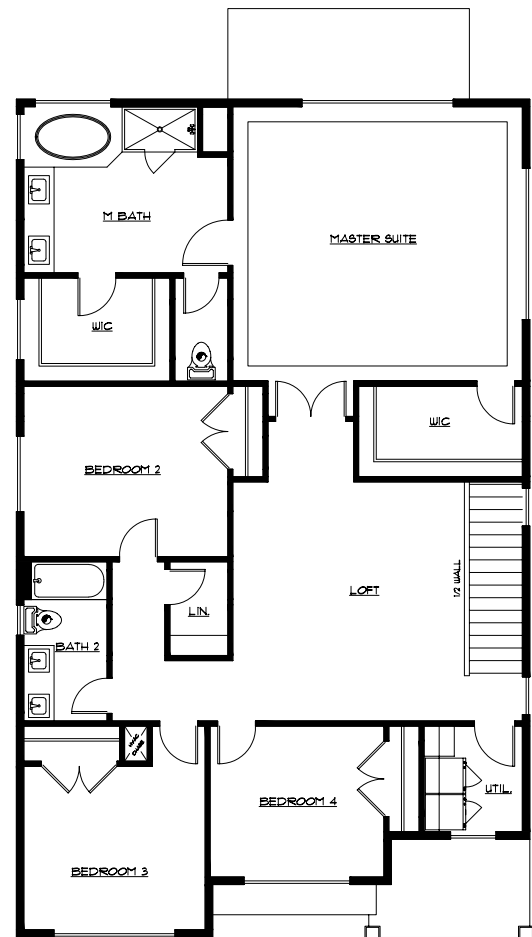
OakRidge
HOMES

FEATURES & HIGHLIGHTS

- Recessed Alder cabinets in several stains to choose from with built-in cabinet hood over stove, soft closed hinges on doors and full extension guides
- Professionally landscaped front yards
- Stainless steel appliance package
- Professionally designed hard surfaces and interiors
- Primed and painted 2 panel smooth surface interior doors with crown molding and wood wrapped windows on the main floor
- 8" primed beveled Cemplank siding
- Lifetime warranty architectural composite roofing
- Low-E white vinyl windows with grids (per plan)
- Outdoor living area with fireplace, mantle, patio, BBQ stub, ceiling fan, oversized slider, and 4 can lights
- High efficiency forced air gas furnace, with electronic ignition, programmable thermostat and quick recovery 50 gallon HWT



MAIN LEVEL



UPPER LEVEL

FOR MORE INFORMATION: Call Rick Seddon (253) 279.1986