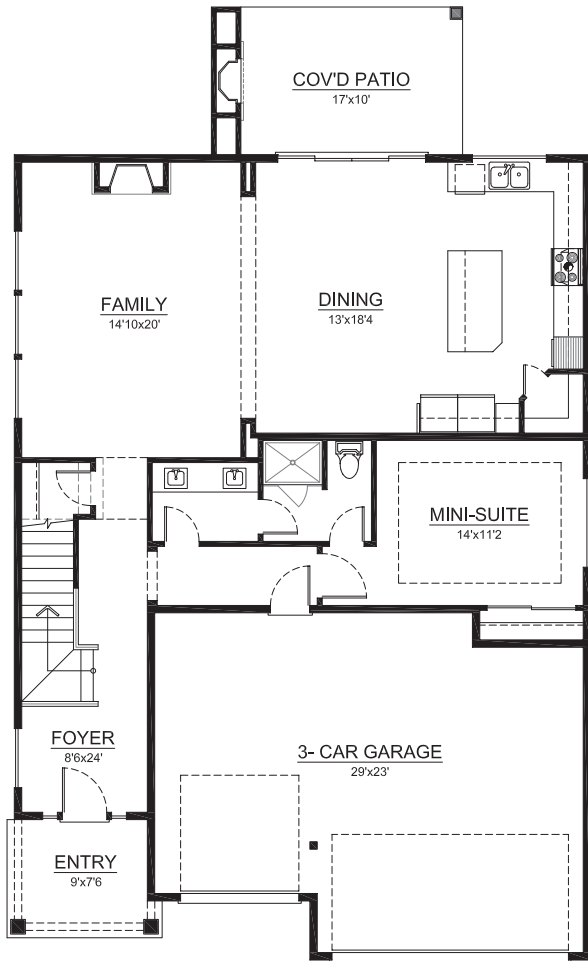


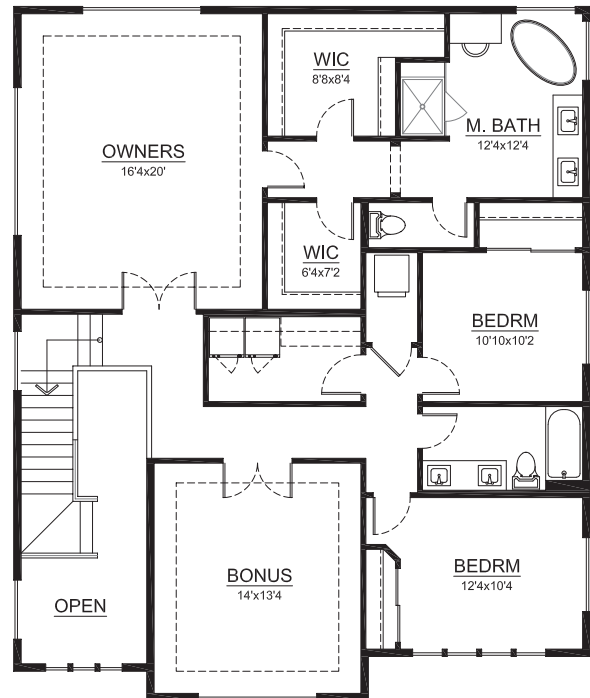
THE SYCAMORE



Total Living: 2,992 sf.
Bedrooms: 4
Bathrooms: 2.75
Garage: 3-Car
Special Features: Covered Back Patio, Bonus on Second Level, Guest Mini-Suite on Main



MAIN LEVEL



UPPER LEVEL

Call Rick Seddon . (253) 279.1986 // SeddonMarketing.com

PLEASE NOTE: In a continuous effort to balance market demands for quality and affordability, the builder of this property reserves the right to change plan specifications, prices and availability without notice.